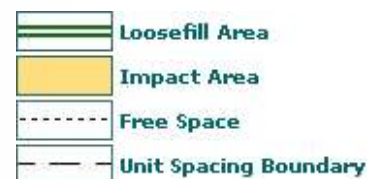
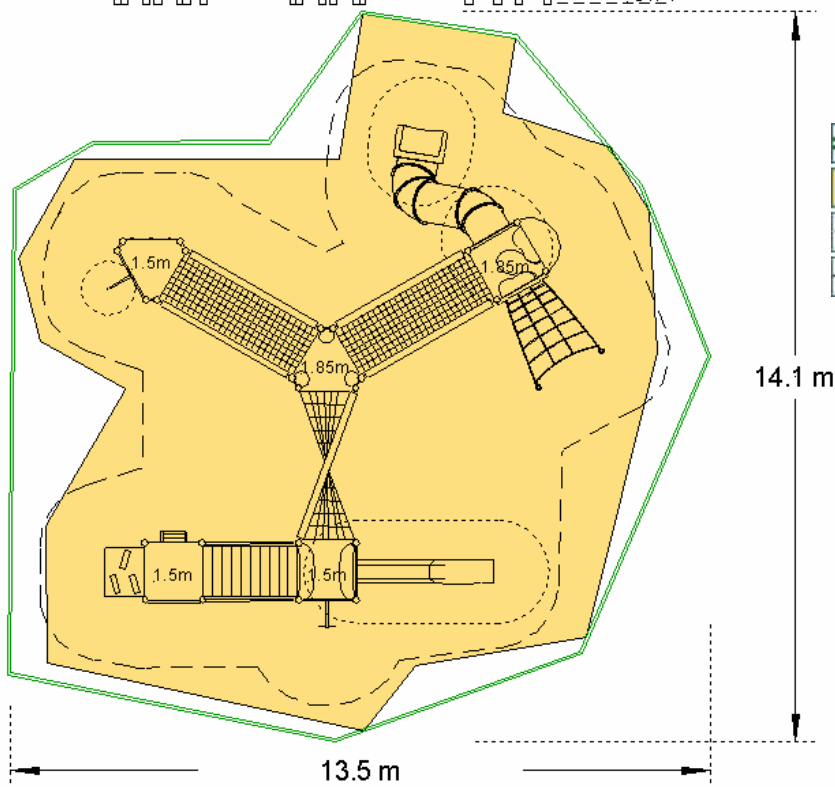
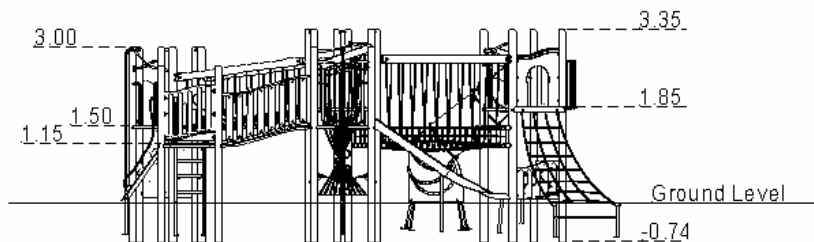


## Jukebox – Rock ‘n’ Roll (Plastic Tube Slide)



### Technical Information

#### Equipment Dimensions

Length / Width / Height **9.5m x 11m x 3.4m**

#### Surfacing and Area Required

Minimum Space Required L/W/H **13.5m x 14.1m x 4.6m**

Max Gradient of Ground **1 in 50**

Free Height of Fall **1.85m**

Impact Area - Wetpour **116.67m<sup>2</sup>**

Loosefill at 250mm **36m<sup>3</sup>**

Bark / Cushionfall / Sand

1m x 1m Rubber Tiles **139**

#### Installation Information

Overall Weight **2298kg**

Heaviest Part **108kg**

Largest Part **2.8m x 1.0m x 0.8m**

Longest Part **4.1m**

Concrete Required **1.73m<sup>3</sup>**



KITEMARKED TO BS EN 1176