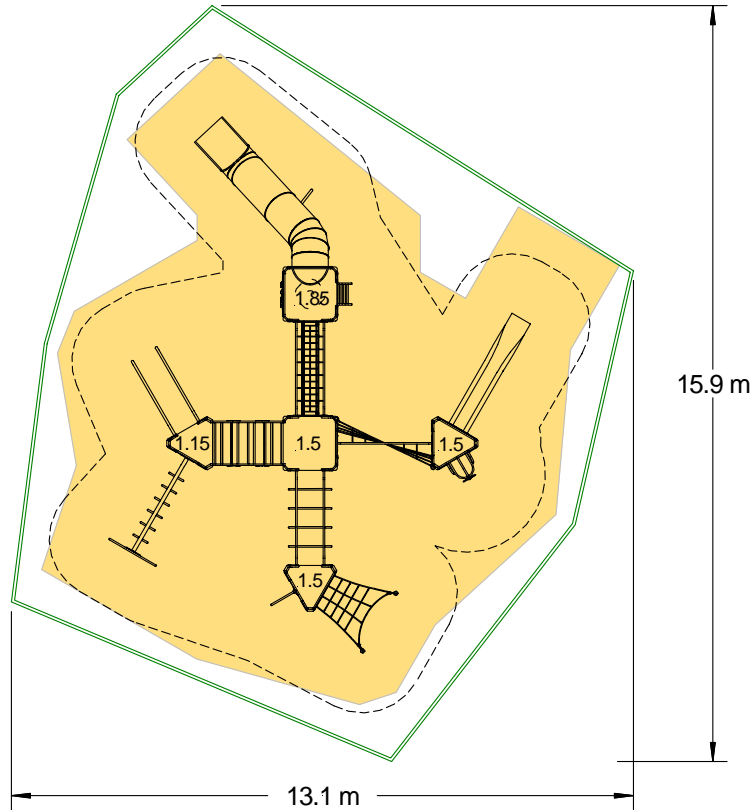
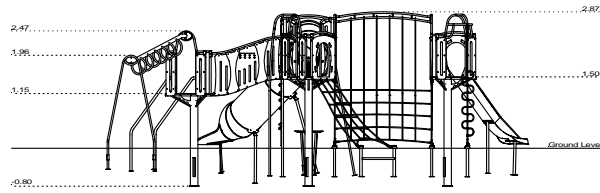


Big City - Tokyo



-  Loosefill Area
-  Impact Area
-  Free Space
-  Unit Spacing Boundary

Technical Information

Equipment Dimensions

Length / Width / Height 11.3m x 8.9m x 2.9m

Surfacing and Area Required

Minimum Space Required L/W/H 15.9m x 13.1m x 4.1m

Max Gradient of Ground 1 in 50

Free Height of Fall 2.0m

Impact Area - Wetpour 99.03m²

Loosefill at 250mm 34m³

Bark / Cushionfall / Sand

1m x 1m Rubber Tiles

Installation Information

Overall Weight 1330kg

Heaviest Part 142kg

Largest Part 4.5m x 1.2m x 1.2m

Longest Part 45m

Concrete Required 1.8m³



KITEMARKED TO BS EN 1176